



mini factories **vision business park** ■ cornubia





## locality plan

mini factories

vision business park ■ cornubia

16071

nts

bk

09 sep 2017





site plan

mini factories

vision business park ■ cornubia

16071 E 1:750 wa 12 mar 2018

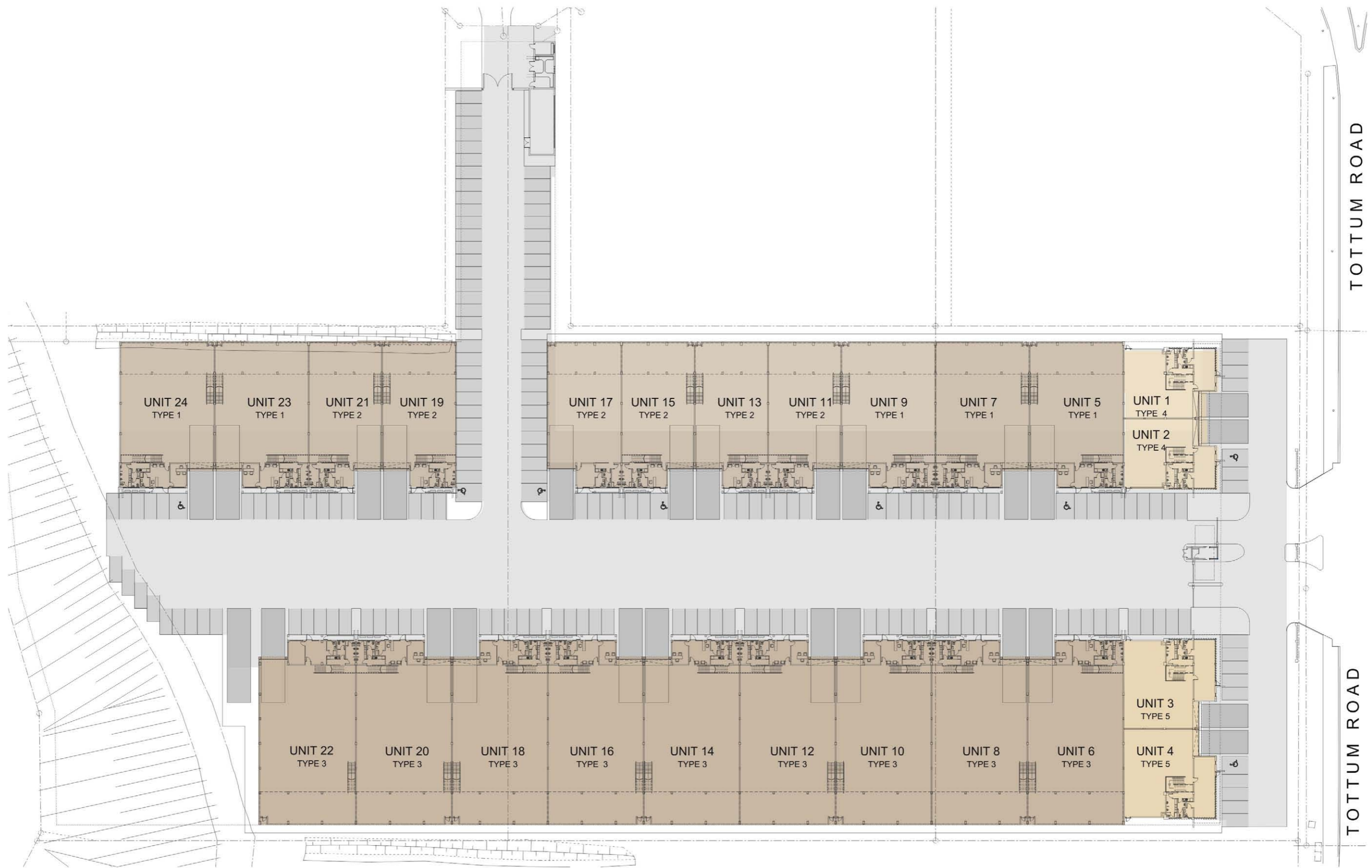
elphick proome architects inc. ■ +27 31 275 5800 ■ info@eparch.co.za ■ www.eparch.co.za ■ durban south africa





landscaping and parking allocation

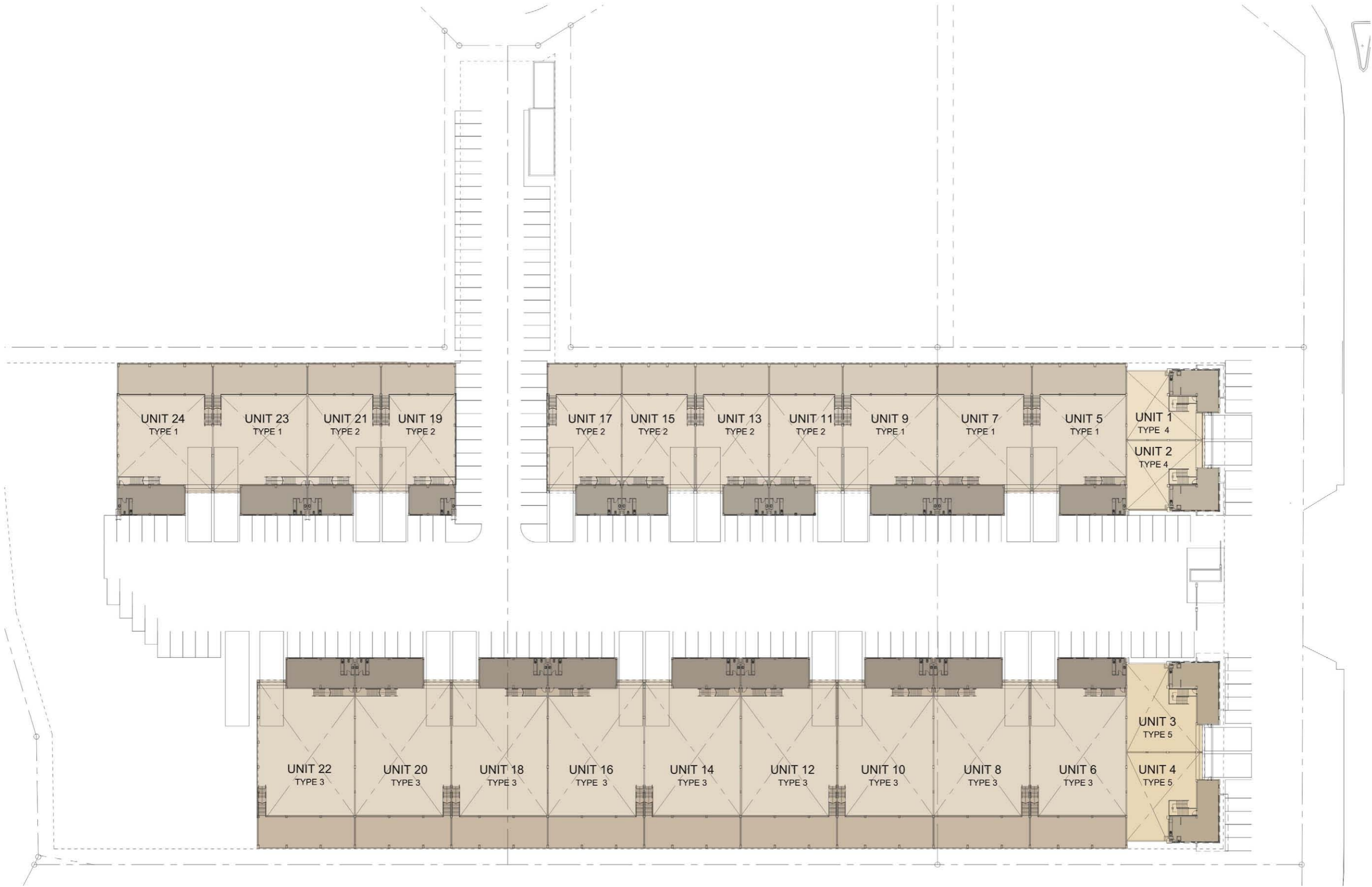




floor plan **level 00**

mini factories

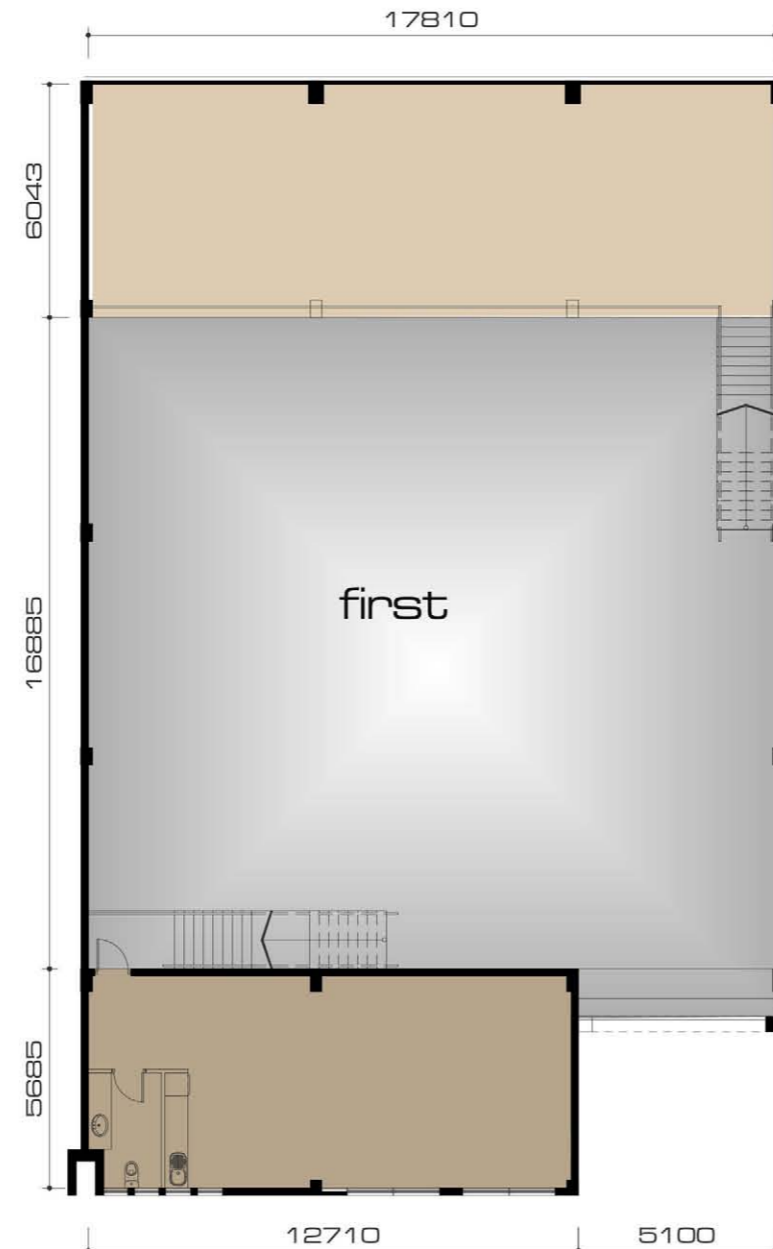
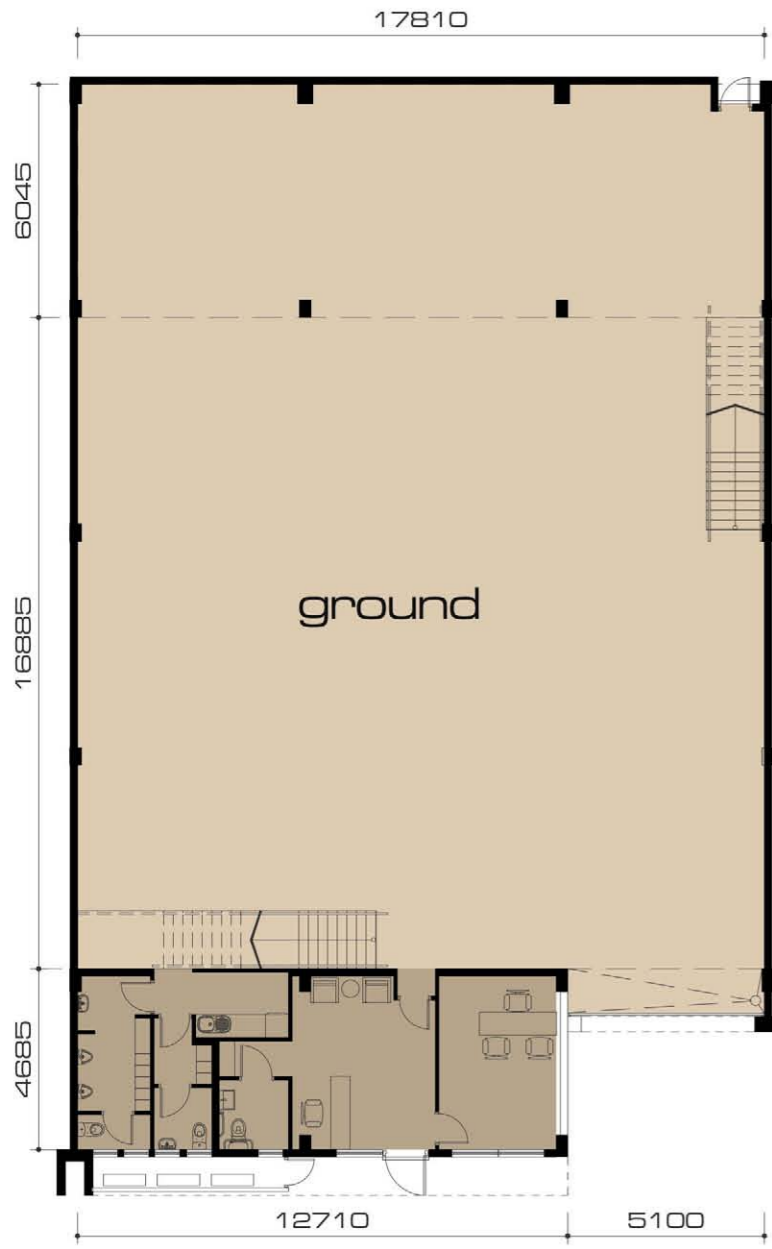
**vision business park** ■ cornubia



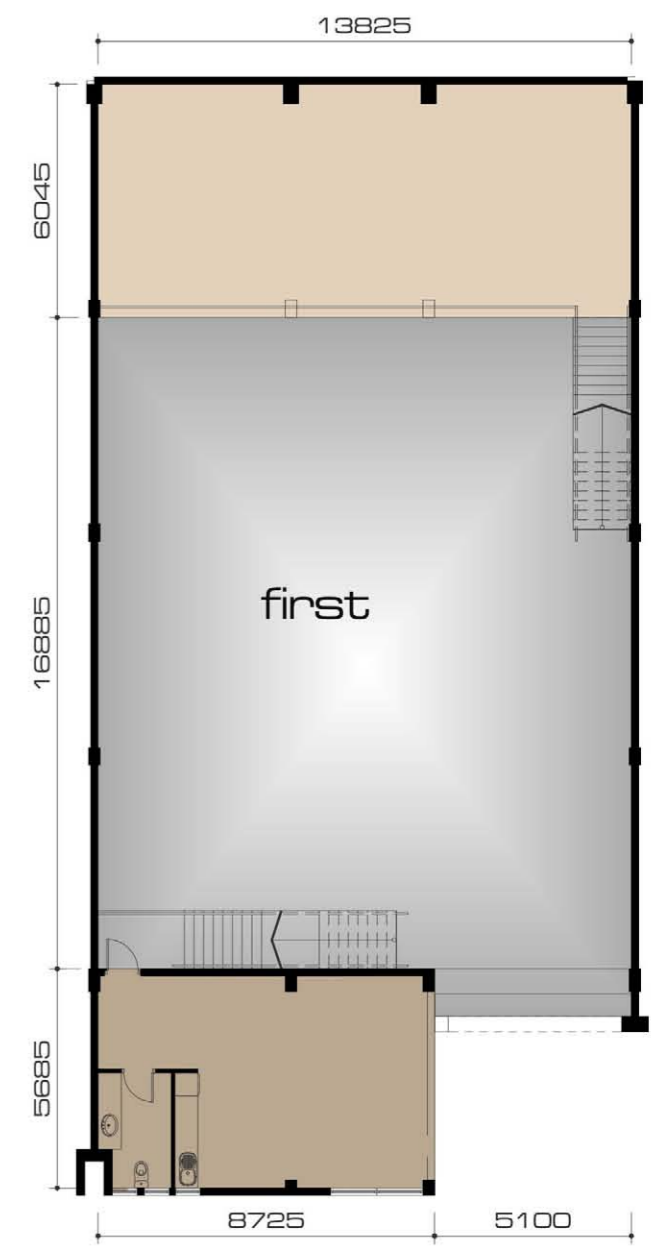
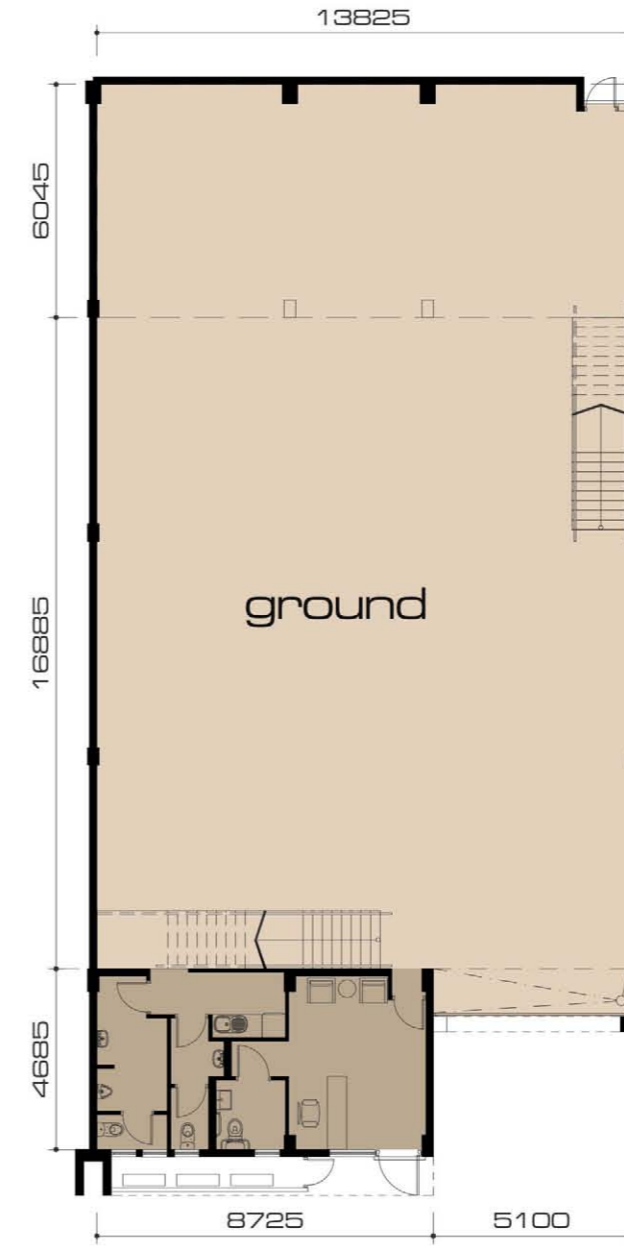
floor plan **level 01**

mini factories

**vision business park** ■ cornubia



type one



type two

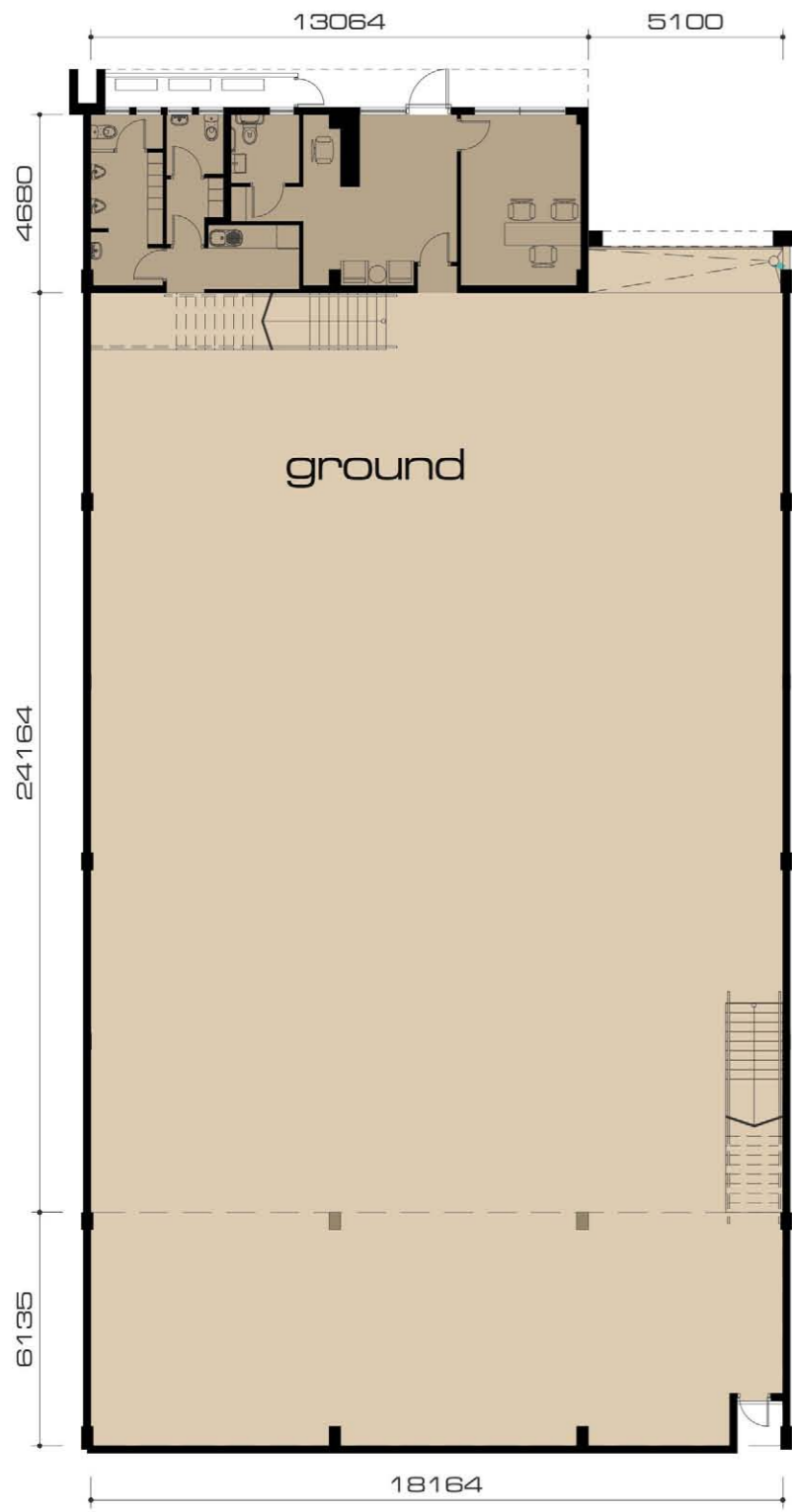
**SECTIONAL UNIT AREAS: 80 amps - electrical allowance**

UNIT TYPE	GROUND STOREY	FIRST STOREY	TOTAL AREA	No.
TYPE 1	491m <sup>2</sup>	182m <sup>2</sup>	673m <sup>2</sup>	5

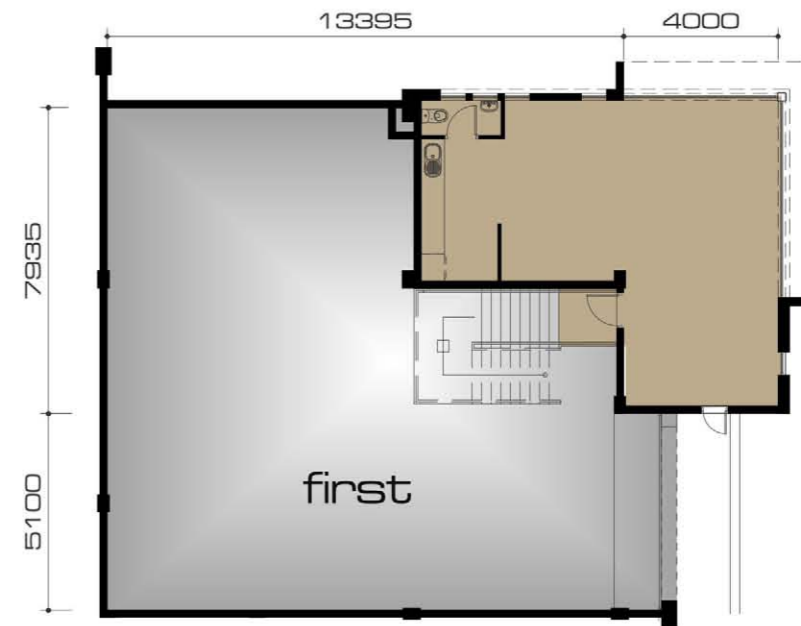
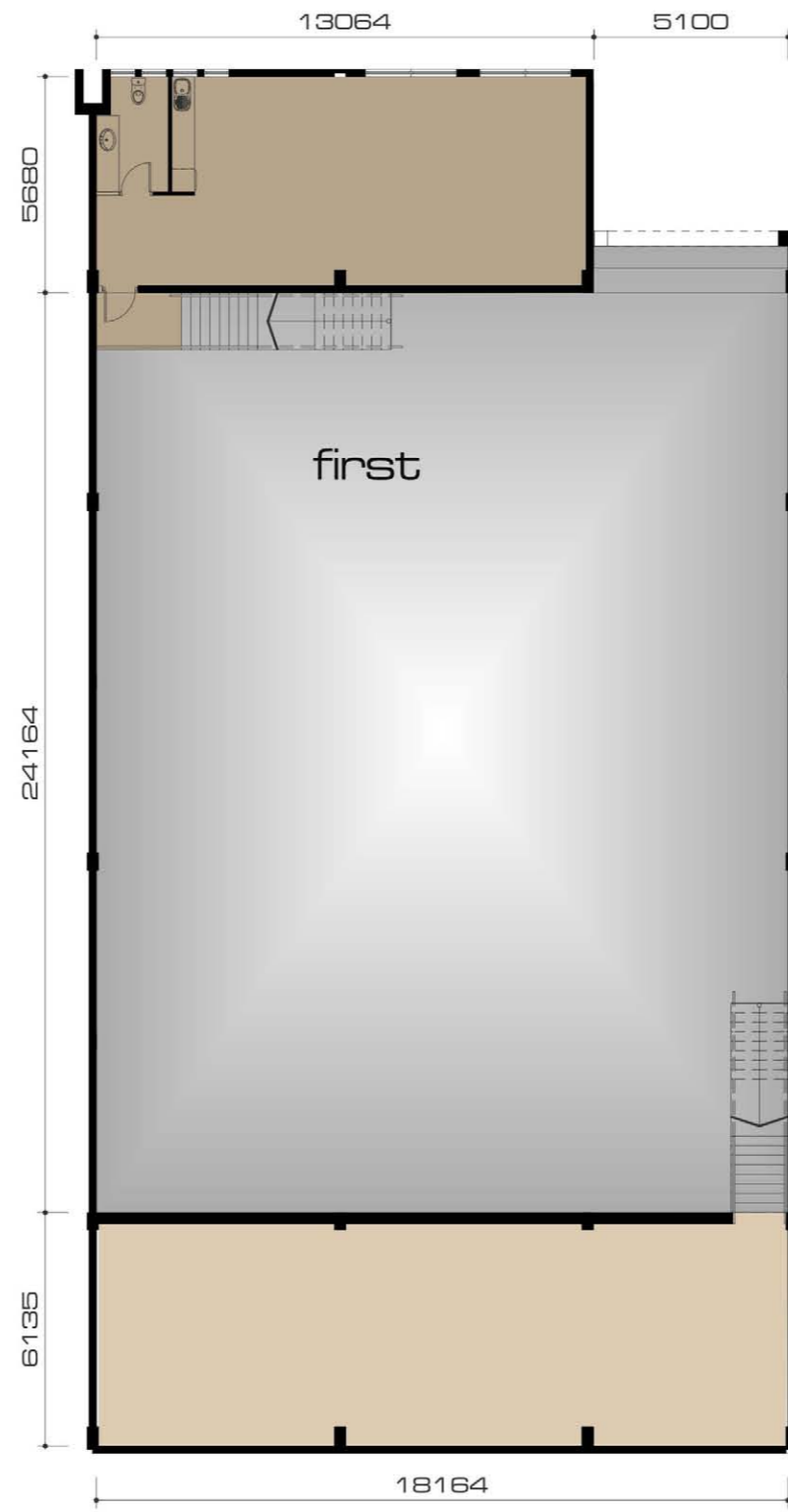
**SECTIONAL UNIT AREAS: 60 amps - electrical allowance**

UNIT TYPE	GROUND STOREY	FIRST STOREY	TOTAL AREA	No.
TYPE 2	380m <sup>2</sup>	136m <sup>2</sup>	516m <sup>2</sup>	6





type three



type four

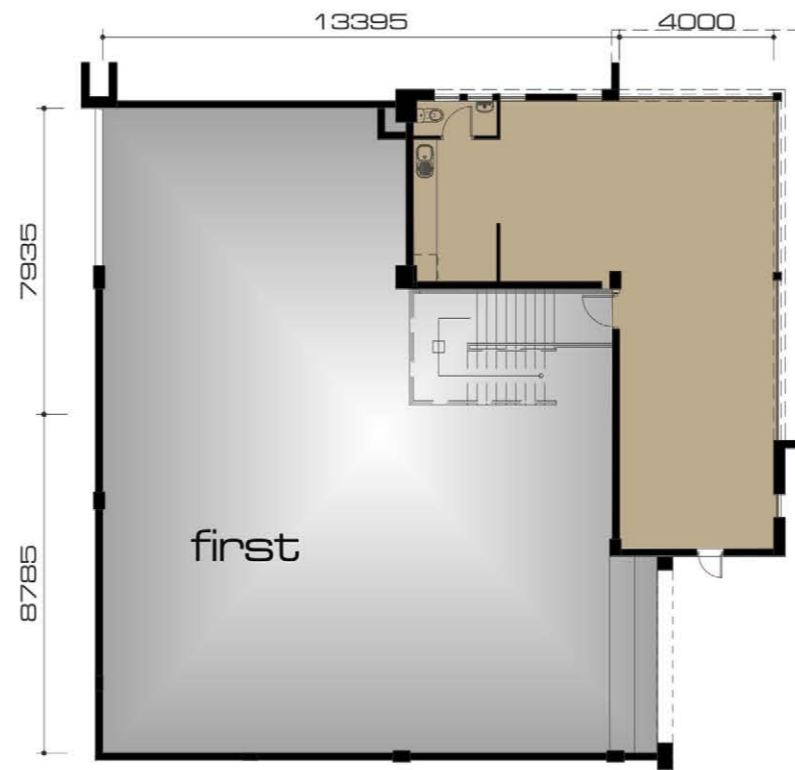
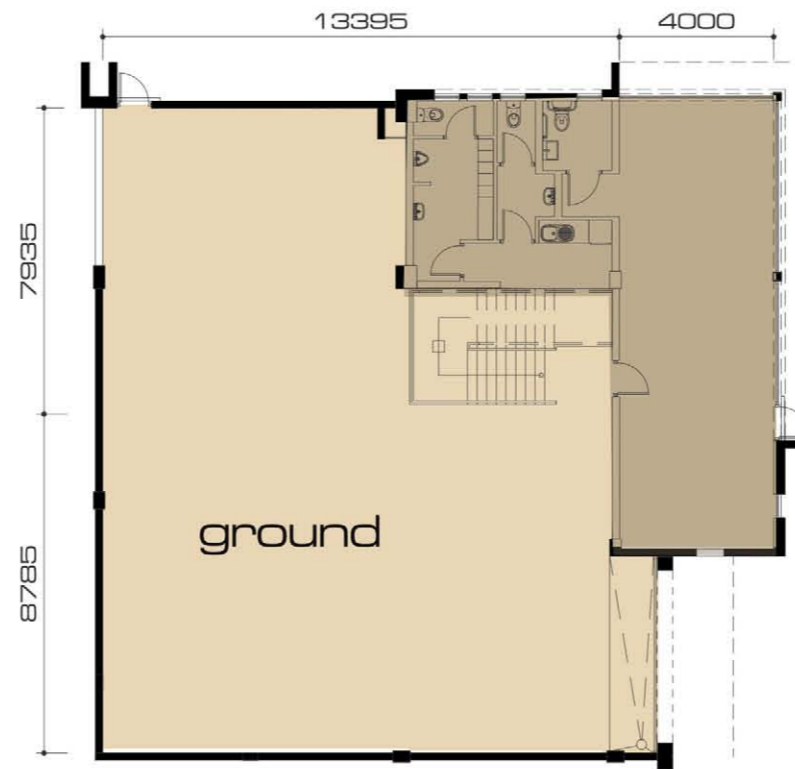
**SECTIONAL UNIT AREAS: 90 amps - electrical allowance**

UNIT TYPE	GROUND STOREY	FIRST STOREY	TOTAL AREA	No.
TYPE 3	636m <sup>2</sup>	187m <sup>2</sup>	823m <sup>2</sup>	9

**SECTIONAL UNIT AREAS: 40 amps - electrical allowance**

UNIT TYPE	GROUND STOREY	FIRST STOREY	TOTAL AREA	No.
TYPE 4	227m <sup>2</sup>	60m <sup>2</sup>	287m <sup>2</sup>	2





type five

SECTIONAL UNIT AREAS: 50 amps - electrical allowance				
UNIT TYPE	GROUND STOREY	FIRST STOREY	TOTAL AREA	No.
TYPE 5	292m <sup>2</sup>	75m <sup>2</sup>	367m <sup>2</sup>	2





3D visuals **view 1**

mini factories

**vision business park** ■ cornubia

16071

B nts

nsh

09 sept 2017

elphick proome architects inc. ■ +27 31 275 5800 ■ info@eparch.co.za ■ www.eparch.co.za ■ durban south africa







3D visuals **view 2**

mini factories

**vision business park** ■ cornubia

16071

B nts

nsh

09 sept 2017

elphick proome architects inc. ■ +27 31 275 5800 ■ info@eparch.co.za ■ www.eparch.co.za ■ durban south africa







3D visuals **entrance**